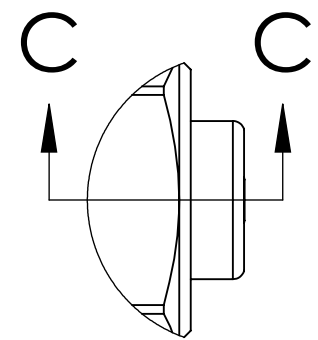
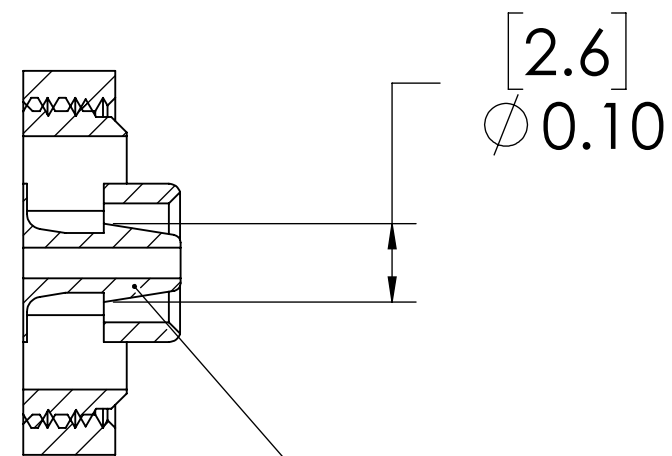


REVISIONS						
SHEET	ZONE	REV.	ECO	DESCRIPTION	DATE	APPROVED
1	ALL	A	50253	INITIAL RELEASE	8/27/2018	HRC
ALL	ALL	B	50307	CONVERT DYED TO MOLDED BLACK	1/10/2020	HRC



DETAIL B

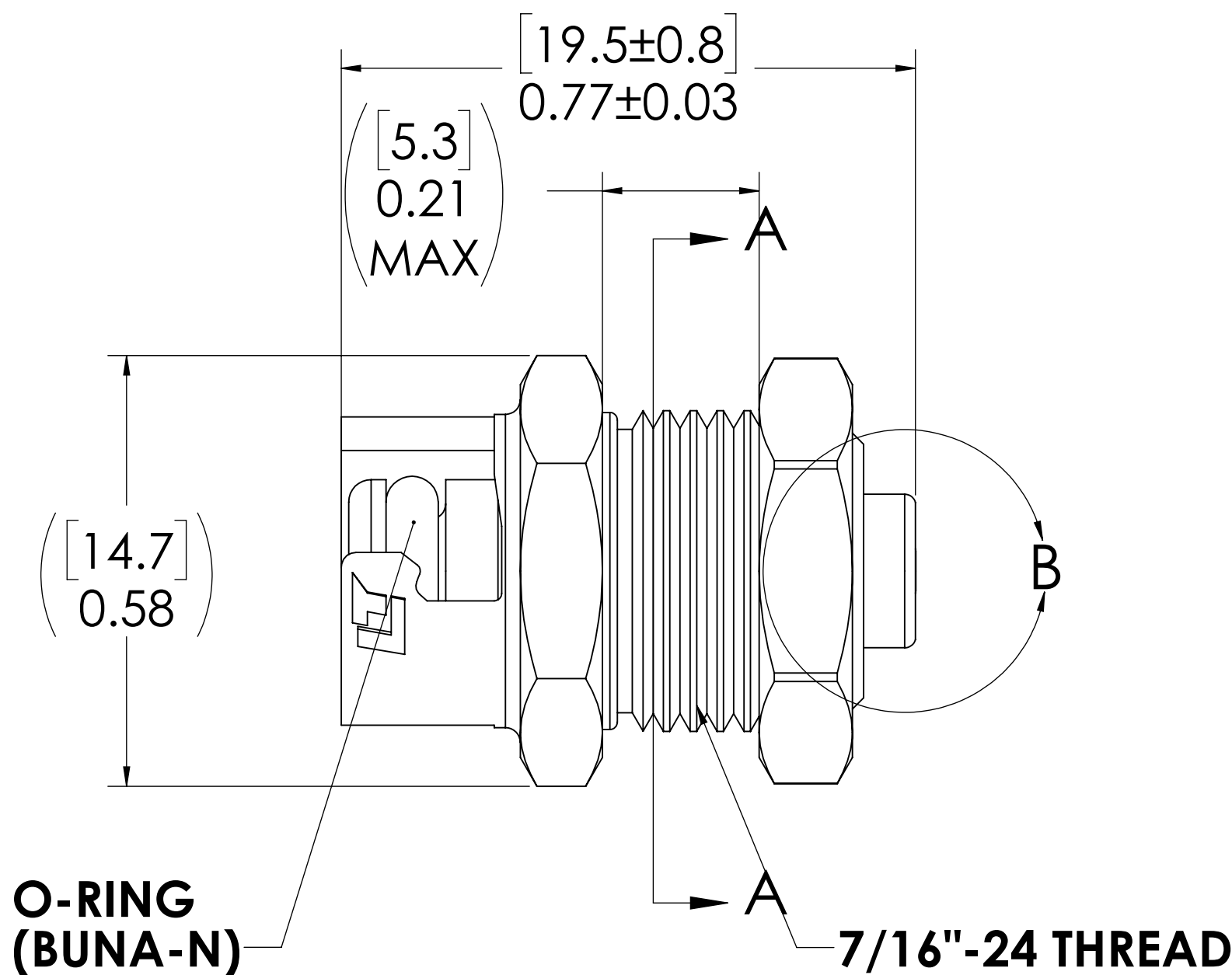
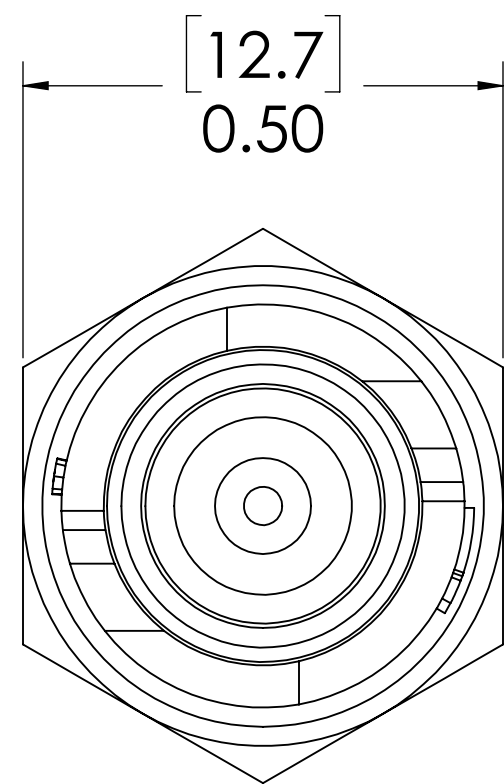
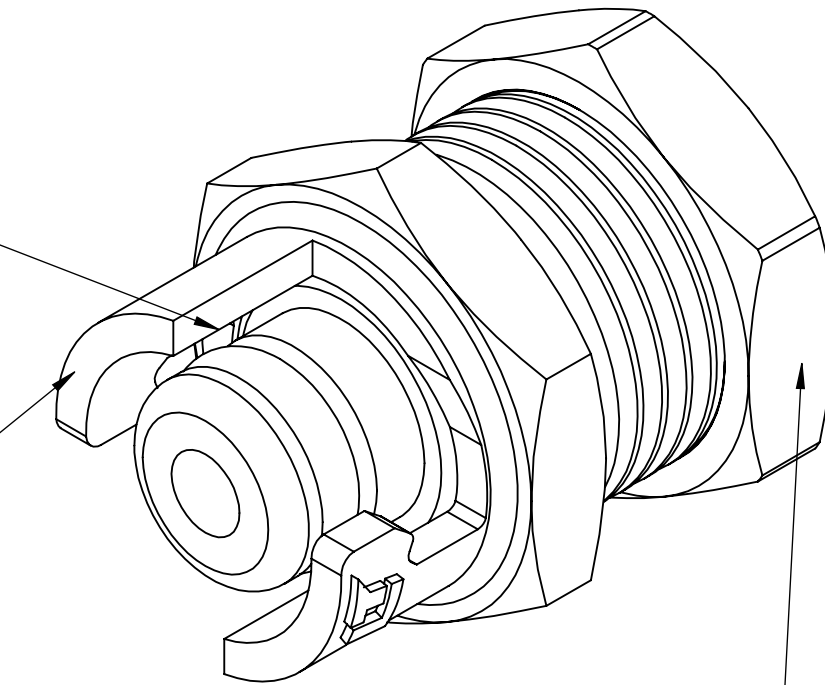


SECTION C-C 1/16" TUBE ID

**PLUG,
(ACETAL)**

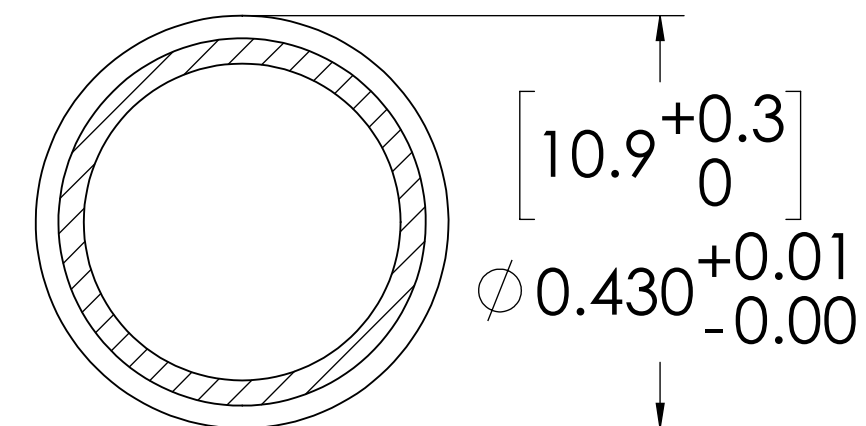
**LOCK SLEEVE,
(ACETAL)**

**PANEL NUT,
(BRASS, NICKEL PLATED)
(PACKAGED SEPERATELY)**



**O-RING
(BUNA-N)**

7/16\"/>



**PANEL OPENING
(SECTION A-A)**

FOR REFERENCE ONLY

NOTES:

- MATERIAL: ACETAL
- COLOR: BLACK
- O-RING MATERIAL: BUNA-N
- O-RINGS LUBRICATED WITH FOOD GRADE SILICONE OIL, 350 CST.

UNLESS OTHERWISE SPECIFIED: DIMENSIONS ARE IN INCHES TOLERANCES: FRACTIONAL ± 1/32 ANGULAR: MACH ± 0.5 BEND ± 2 ONE PLACE DECIMAL ± 0.1 TWO PLACE DECIMAL ± 0.01 THREE PLACE DECIMAL ± 0.005 TWO PLACE DUAL (mm) [± 0.12]	DRAWN	CGS	5/18/18	
	CHECKED	HRC	5/18/18	
	ENG APPR.	HRC	8/27/18	
	MFG APPR.	BDB	8/27/18	
PRODUCTION	LS	8/27/18		PART NO: 10AC-PB3-01BLK DESCRIPTION: LinkTech 10AC Series Panel Mt. Male, Non-valved 1/16" HB, Molded Black Color, Natural Acetal SIZE DWG. NO. REV C 10AC100076 B SCALE: NTS WEIGHT: SHEET 1 OF 1
<small>PROPRIETARY AND CONFIDENTIAL THE INFORMATION CONTAINED IN THIS DRAWING IS THE SOLE PROPERTY OF LINKTECH LLC. ANY REPRODUCTION OR DISCLOSURE IN PART OR AS A WHOLE WITHOUT THE WRITTEN PERMISSION OF LINKTECH LLC IS STRICTLY PROHIBITED.</small>				